



2023

New Residents Information Kit



Kentish Council
PO Box 63 (69 High Street), SHEFFIELD TAS 7306

Phone - (03) 6491 0200
Email - council@kentish.tas.gov.au
Website - www.kentish.tas.gov.au

Disclaimer: Kentish Council has made every endeavour to ensure that details are correct but can accept no responsibility for any inaccuracy or mis-deception contained in the publication as a result of information supplied.

Index

Mayor's Welcome	4
Profile of Kentish	5
Advertising by Council	6
Asbestos Removal	6
Banking	7
Building	7
Business Development.....	7
Camping and Caravanning	8
Cemeteries.....	8
Children's Services.....	9
Community Grants	9
Community Organisations & Sports Clubs	9
Community Road Safety Committee.....	10
Council Meetings.....	10
Council Office.....	11
Council Structure.....	11
Driveway and Vehicle Crossovers	13
Education	13
Elderly Persons Units	14
Emergency Information	14
Environment.....	15
Burning Off	15
Back Yard Incinerators.....	16
Noise	16
Fence Construction	17
Footpaths	18
Garbage Collection Service	18
Health.....	18
Immunisation.....	19
Justices of the Peace	20
Living Next Door to Farmers.....	20
Museum	21
Parking.....	21
Parks and Reserves	21
Pets.....	22
Planning Permits	23
Plumbing Permits	23
Postal Services	23
Rates.....	24
Pensioner Rate Remission	24
Recycling Service.....	24
Road Reservation Works.....	25
Sharps Disposal Service	25
Sport and Recreation	25
Stormwater.....	26
Transport.....	26
Air.....	26
Road.....	26

Sea.....	27
Venue Hire	27
Visitor Information Centre.....	27
Volunteering	28
Waste Transfer Station.....	28
Water and Sewerage.....	29
Weeds.....	29
Check List	32
Notes.....	33

Mayor's Welcome

On behalf of Council and residents, I would like to welcome you to Kentish and congratulate you on choosing such a great place to live.

We believe our beautiful countryside, majestic mountains, quaint towns and meandering rivers offer a lifestyle that is something special that you will soon come to appreciate and enjoy. I believe Kentish to be the most beautiful municipality in Tasmania.

I encourage you to lay down roots in our community. Joining a community group is a great way to do this. By contributing through a community group, you will get to know local people and also improve the lives of others in our municipality.

The Council, along with other local and government agencies, provides an array of services to our area. Should you require information on any of these services please feel free to contact the Council Office on 6491 0200 or visit our website www.kentish.tas.gov.au.

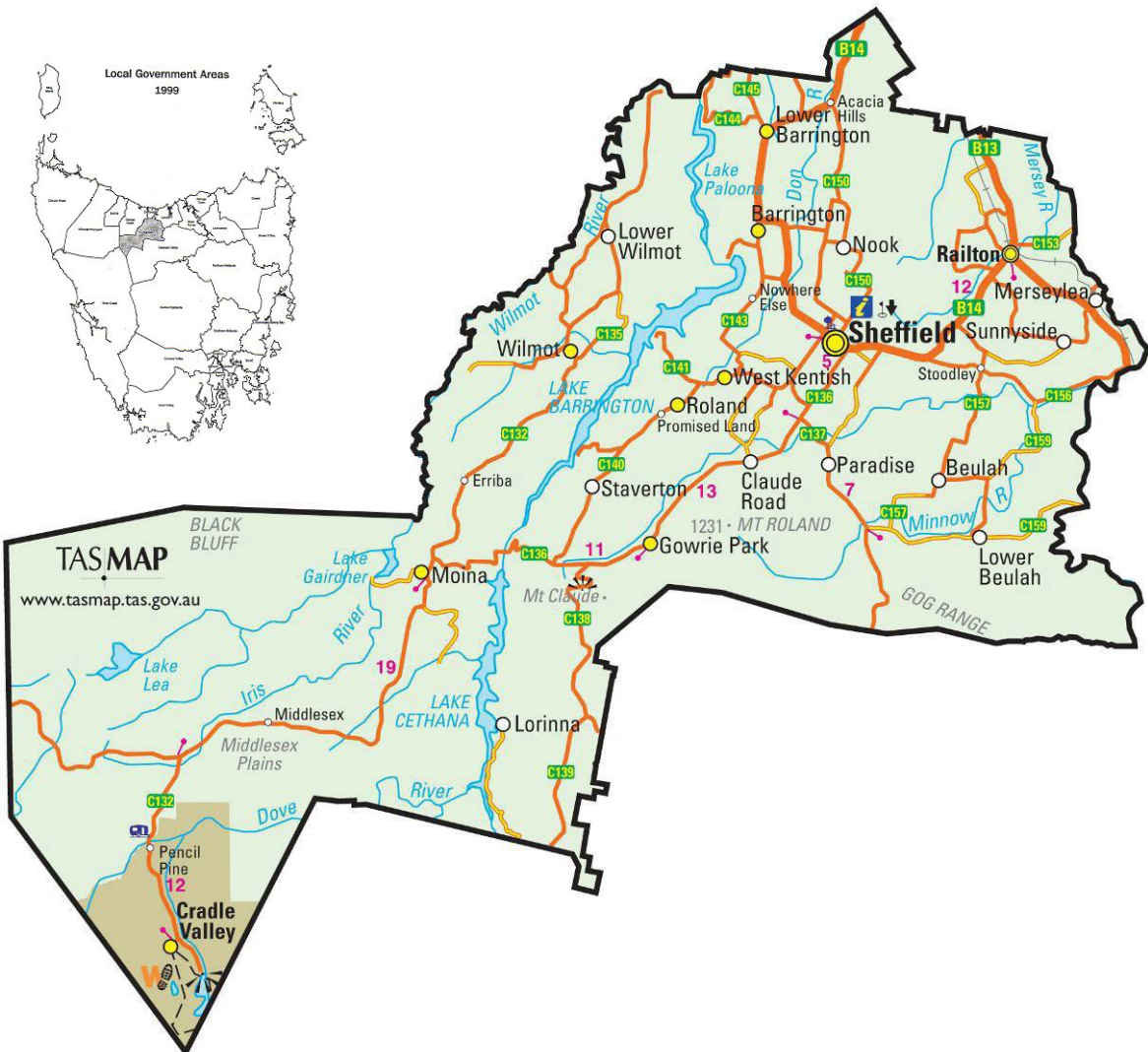
Again, please accept our welcome and I trust you will enjoy your new home.

Kate Haberle
MAYOR



Profile of Kentish

Population (ABS-Estimated resident population)	6,393
Number of Electors	5,137
Area	1,187 sq kms
Number of Valued Properties	3,722
Assessed Annual Value of Rateable Properties	\$72.06M
Road Distances:	
- Sealed	269km
- Unsealed	202km
- Total	471km
Number of Bridges	104



Advertising by Council

Newspaper

Council generally advertises in The Advocate newspaper (local paper). Council also advertises in the local monthly publication 'The Kentish Voice'.

Notice Boards

Notice boards advising of both Council and community activities are located:

- at the Sheffield Post Office, Main Street, Sheffield
- within the Service Tasmania Shop, High Street, Sheffield
- within the Kentish Council Office, High Street, Sheffield

Council also displays some notices in shop windows in Railton and Wilmot.

Website and Facebook

Council operates its own website - www.kentish.tas.gov.au - and also has a Facebook Page – 'Kentish Council'.

Asbestos Removal

WorkSafe Tasmania is the regulatory authority in relation to asbestos removal. For information on the requirements for asbestos removal contact:

WorkSafe Tasmania
PO Box 56
ROSNY PARK TAS 7018

Phone: 1300 366 322
Email: wstinfo@justice.tas.gov.au
Web: www.worksafe.tas.gov.au

For a fee, the Waste Transfer Station at Spreyton accepts small amounts of asbestos material that have been securely double wrapped. Please contact Devonport City Council Staff on 6427 3351.

Banking

Bank@Post services (deposit cash, deposit cheques, withdraw money and balance enquiries) are available from the Sheffield Post Office, 58 Main Street, Sheffield. Bank@Post services allow access to over 80 banks and financial institutions including CommBank, Westpac and NAB.

A Commonwealth Bank ATM is located at 67 Main Street, Sheffield.

Within all townships (Sheffield, Railton and Wilmot) EFTPOS facilities are available from local businesses.

Building

Building Permits need to be obtained for demolitions, alterations, additions, change of use and all new buildings including certain fences and swimming pools.

Before commencing any building projects, it is advisable to contact Council's Building Department to find out just what is required of you.

It is important to note that planning approval will need to be obtained before most building plans can proceed. When preparing to submit a building application, it is recommended that contact be made with Council's Planning staff (phone 6491 0200).

Business Development

For information about business development opportunities and Council's Economic Development Strategy, please contact Council's Economic and Tourist Development Officer on 6491 0200.

Free to low cost advice, support, digital advisory services and mentoring to help build or develop a business are available from Switch Tasmania. Contact Switch Tasmania via email admin@switchtasmania.com.au or phone on 6408 7005 or check out the website www.switchtasmania.com.au

Camping and Caravanning

Commercial Camp Grounds

Two commercial campgrounds are available with powered and unpowered sites for tents, caravans and motorhomes. Facilities include shared bathroom amenities, camp kitchens, plus a range of backpacker and self-contained accommodation units:

- Gowrie Park Wilderness Village: 1447 Claude Road, Gowrie Park
 Ph: (03) 6491 1385
 Website: www.gowriepark.com.au
 Email: info@gowriepark.com.au
- Discovery Holiday Parks Cradle: 3832 Cradle Mountain Rd, Cradle Mountain
 Ph: (03) 6492 1395
 Website: www.discoveryholidayparks.com.au/caravan-parks/tasmania/cradle-mountain-cradle-mountain
 Email: cradle@discoveryparks.com.au

Free and Low-Cost Camping

Camp Name	Address	Free/Low cost	Type of camping
Lake Barrington Park	Lake Barrington Road, Wilmot	Free	Tents, Caravans, Motorhomes
O'Neills Creek Reserve	Claude Road, Gowrie Park	Low Cost	Tents, Caravans, Motorhomes
Sheffield Recreation Ground	Spring Street, Sheffield	Low Cost	Self-Contained Motorhomes and Caravans only
CMCA RV Park Railton	The Esplanade, Railton	Low Cost (must be CMCA Members)	Self-Contained Motorhomes and Caravans only
Railton RV Park	The Esplanade, Railton	Low Cost	Self-Contained Motorhomes and Caravans only
Railton Hotel	Foster Street, Railton	Low Cost	Tents, Caravans, Motorhomes

Dump points

Blackwater dump points are available at the Sheffield Recreation Ground, Spring Street, Sheffield and at Railway Park, The Esplanade, Railton.

Cemeteries

A limited number of plots are available for reservation at the Sheffield Cemetery. Plots are available at the Wilmot Cemetery and niches are available within the columbarium (ashes wall) however applicants must be able to demonstrate a link with the Wilmot Community. Please contact Council on 6491 0200 for further information.

There are a number of cemeteries located throughout the Kentish Municipality including; Barrington General Cemetery, Claude Road General Cemetery, Cradle Mountain Cemetery(one grave only), Lorinna General Cemetery, Railton Anglican Church Cemetery, Railton General Cemetery, Railton Roman Catholic Cemetery, Railton Uniting Church Cemetery, Sheffield General Cemetery and Wilmot General Cemetery.

Council keeps records for the Sheffield, Railton and Wilmot Cemeteries. Records for all other cemeteries are held by the respective religious organisations with the exception of the Claude Road Cemetery, which is overseen by the Claude Road Cemetery Committee.

Children's Services

Child Care

Adventure Patch provides child care at its Roland View Centre (formerly the Kentish Child Care Centre) located at 7 Henry Street, Sheffield open Monday to Friday from 8am – 5pm. The centre caters for children from 6 weeks to 5 years. For further information telephone 6411 6262.

A Family Day Care Service (in-home care) is also provided by Adventure Patch. Contact Adventure Patch on 6135 4377 for further information.

HIPPY (Home Interaction Program for Parents and Youngers)

The Kentish Regional Clinic delivers the HIPPY Australia Program across Kentish and Latrobe. HIPPY is an in-home 60 week curriculum of learning for children over two years of age. For further information telephone 6491 1552.

Community Grants

Council provides two types of Community Grant Programs:

1. Small Grants Program (up to \$500); and
2. Large Grants Program (from \$500 to \$2,500)

Small grants may be applied for at any time of the year. Applications may be submitted in writing without the need of an application form however, some specific information is required. Please contact Council's Community Development Team for further information.

The Large Grants program is advertised twice a year. Applications must be submitted on Council's application form. Forms are available from the Council Office and website during the grant periods. For further information visit <https://www.kentish.tas.gov.au/community/community-grants>.

Community Organisations & Sports Clubs

The community is well served by a number of active Community Organisations and Sports Clubs. For a full listing please refer to the Kentish Local Services and Community Directory which is available from the Council Office and website www.kentish.tas.gov.au

Council Meetings

The Council conducts its ordinary meetings on the third Tuesday of each month at the Kentish Council Chambers, 69 High Street, Sheffield. The dates are occasionally varied to avoid public holidays and religious festivals.

All Ordinary and Special Meetings commence at 6.00pm and are open to the public, although the conduct of some types of business (prescribed in the Local Government Act 1993) does occur in closed session.

The Council welcomes and encourages the public to attend its meetings. It is recommended that members of the public wishing to attend a Council meeting RSVP prior to the meeting by calling Council on 6491 0200.

At each Ordinary Meeting, up to 15 minutes is set-aside shortly after commencement to enable members of the public to ask questions of Council or to make public statements on matters relevant to Council business. Speakers usually have 3-4 minutes to speak on their issue or topic. Submissions, comments or questions in relation to items listed in the Planning Authority agenda are not permitted.

Agendas for Ordinary Meetings are normally available at the Council Offices the Thursday before each meeting or online at www.kentish.tas.gov.au. Copies are also available on the night of the meeting.

Council Office

Residents can transact all their Council business at the Council office at 69 High Street, Sheffield. Opening hours are from 8.00am until 4.30pm. A telephone service is provided until 5pm, phone 6491 0200. Council's contact details are:

Postal: PO Box 63, SHEFFIELD TAS 7306

Email: council@kentish.tas.gov.au

Further information on Council and the Kentish Municipality is available on our website at www.kentish.tas.gov.au or our Facebook Page <https://www.facebook.com/kentishcouncil>

For after hours assistance/emergencies please call 6491 0200. Your call will be directed to Council's call centre.

Council Structure

Council has nine elected members. Each Councillor is elected for a four year term on an all in, all out basis.

Voting in Local Government Elections

Voting in Local Government elections is compulsory (for electors enrolled on the State roll).

If you are enrolled on the State roll, you are automatically enrolled to vote in the Local Government elections in the municipal area in which your enrolled address is located.

If you are eligible to be on the State roll but are not enrolled or your details needs updating, you can do either online with the Australian Electoral Commission (AEC) www.aec.gov.au/enrol. You can also print the forms from their website, collect a form from the AEC or phone the Tasmanian Electoral Commission (TEC) for a form 1800 801 701.

General Manager's Roll

You are eligible to enrol for Local Government elections in Municipalities where:

- You own or occupy land but are not eligible to be on the State roll for that area;
- You are the nominated representative of a corporate body which owns or occupies land in the municipal area.

To enrol under these special provisions, you need to obtain a copy of the appropriate enrolment form by contacting the Council office.

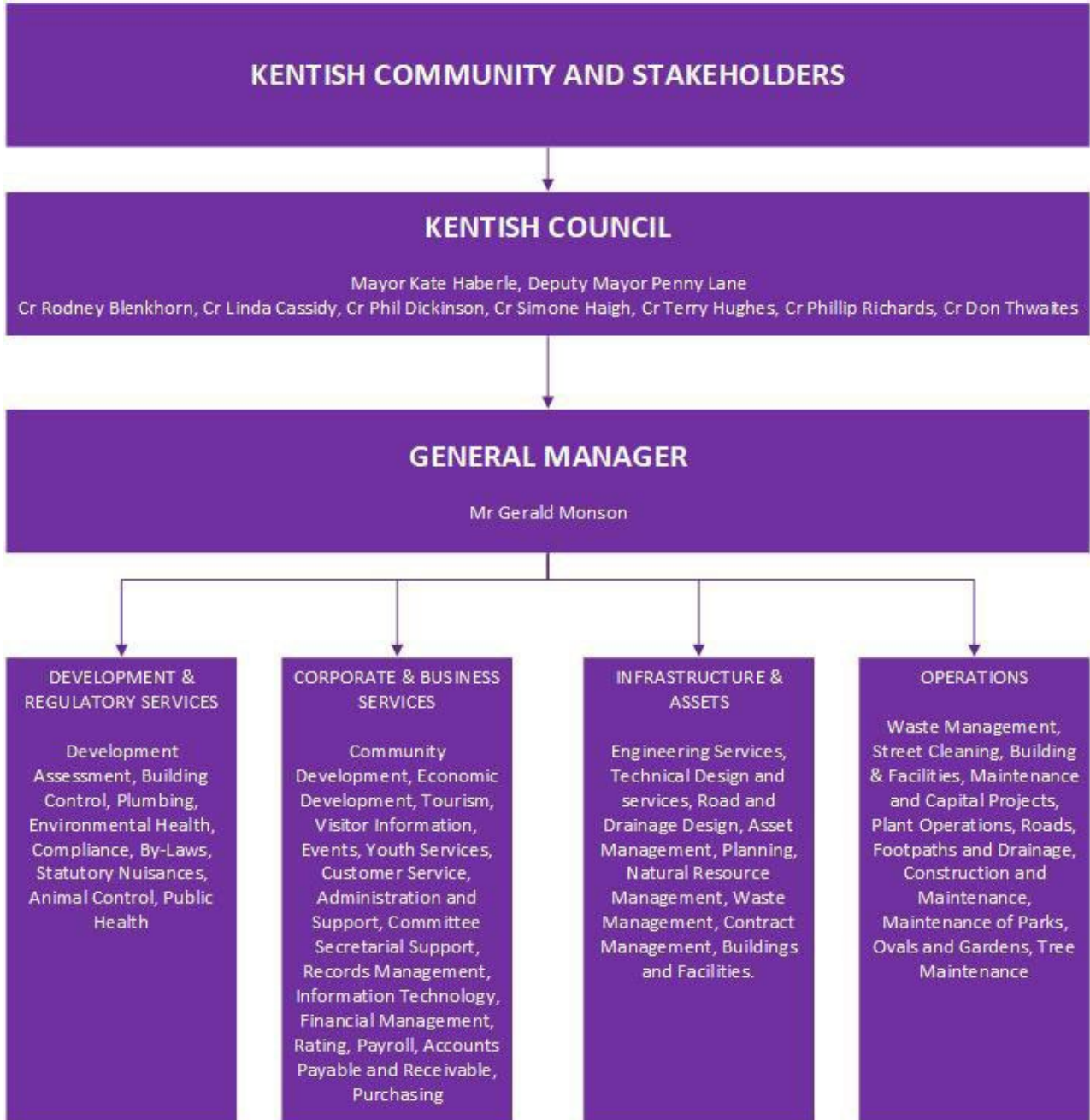
Role of Council

The positions of Mayor and Deputy Mayor are popularly elected by residents every four years.

The Councillors role is to direct and control the affairs of Council according to the *Local Government Act 1993* and other relevant legislation. Councillors are required to represent the interests of residents and ratepayers, provide leadership and guidance to the community and encourage communication between Council and the community.

The General Manager is the Chief Executive Officer of the Council and is responsible for implementing the decisions of Council, day-to-day management, exercising any functions delegated by Council, appointing, directing and managing staff and implementing Council's Strategic Plan.

COUNCIL STRUCTURE



Driveway and Vehicle Crossovers

Vehicle crossovers and driveways within the road reservation are the responsibility of the property owner, not Council.

Any upgrade however must conform with Council's standard drawing for vehicle crossovers/driveways and obtain approval from Council's engineering services prior to undertaking works. Works must also be carried out by appropriately qualified persons.

Education

A number of education facilities operate within the Kentish Municipality.

Primary School (Kindergarten – Grade 6)	Sheffield School Sheffield School (Railton Campus) Wilmot Primary School	6491 8222 6491 8222 6492 1421
Secondary School (Grade 7 - 12)	Sheffield School	6491 8222

Additionally, the following opportunities exist for students from Kentish:

Geneva Christian College	197 Moriarty Road, Latrobe	Grade K – 12	6426 1053
Latrobe Primary School	23 Lewis Street, Latrobe	Grade K – 6	6426 1203
Latrobe High School	101 Percival Street, Latrobe	Grade 7 -10	6426 1061
St Brendan Shaw College	127 James Street, Devonport	Grade 7 -12	6424 7622
The Don College	87 Watkinson Street, Devonport	Grade 11 – 12	6424 0200
TasTAFE	Valley Road, Devonport	Pre-vocational	1300 655 307
Skills Tasmania	Valley Road, Devonport	Pre-vocational	1300 655 846
University of Tasmania	Campuses at Burnie, Launceston, and Hobart		6226 2999

The education facilities are easily accessed through an established bus service departing from Sheffield. For further information regarding the bus service please contact the respective education institution.

Other education opportunities for Kentish residents include:

Sheffield Library	Henry Street, Sheffield	6491 1533
Sheffield Online Access Centre	Henry Street, Sheffield	6491 1533

Elderly Persons Units

Within Kentish there are two different organisations which provide elderly persons units:

Tandara Lodge Community Care Inc.

Tandara Lodge has 40 units in Sheffield and 4 Units in Railton. There is no bond required, only a fortnightly payment. Tandara are responsible for the maintenance of the lawns and buildings. For further information contact Tandara Lodge on 6491 1277.

Tandara also has 45 beds in their Aged Care Facility (3 respite care). The Aged Care Facility offers daily exercise, meals, medication, and all aspects of care from trained nurses.

Sheffield RSL Units

The Sheffield RSL has 5 units in Sheffield. Bond is required with a weekly rent. The RSL is responsible for the maintenance of lawns and buildings. For further information telephone 6491 1536 or 6491 1257.

Allocation of all units is based on eligibility and the order in which applications are received.

Emergency Information

Emergencies may not be something we think about every day, but they can strike at any time and disrupt lives in many different ways.

For life threatening emergencies call 000.

For emergency help in floods and storms call the SES on 132 500. The SES website has important information that you may find of interest www.ses.tas.gov.au.

The Tas Fire website also has important information that you may find interesting, with topics covering bushfire survival plans and checklists www.fire.tas.gov.au.

During times of emergency such as bushfires and extreme weather events, your landline or mobile phone may now be used to deliver a critical warning. Learn more about this system at www.emergencyalert.gov.au

The following link to the Red Cross website has been designed to help people better prepare, respond to and recover from emergencies www.redcross.org.au/emergency-resources.aspx.

Following an emergency e.g. flood, fire, wind storms etc. Council can be contacted for information and referral to support systems Phone 6491 0200.

Ambulance	Emergency only	000
Council	Emergency only after hours	6491 0200
Domestic Violence Crisis Service		1800 737 732
Drug and Alcohol Service	62 Stewart Street, Devonport	6423 6635
Electricity	Emergencies and difficulties	132 004
Fire Brigade	Emergency only	000
	A number of volunteer rural brigades operate throughout the municipality – refer to local services directory	
Kentish State Emergency Service	13 Albert Street, Sheffield	0417 551 090 0417 551 701
Lifeline	Counselling Service (24 hours)	131 114
Mersey Community Hospital	Torquay Road, Latrobe	6478 5500
Poisons Information		131 126
Police	Emergency only	000
	Sheffield Police Station	6491 1240
	Railton Police Station	6496 1110
Stormwater and Road	Kentish Council	6491 0200
Sewerage and Water	Tas Water	136 992
Telstra		132 200
Youth Shelter	176 William Street, Devonport	6424 7375
Emergency Relief	Kentish House, 5 Austin Place, Sheffield	6491 2322

Burning Off

In the interest of reducing pollution loads and possible effects upon neighbours, Council does not encourage the burning of accumulated growth and stockpiled cleared material, particularly in Rural Residential and Closed Residential areas. Waste material, especially from land clearing, should ideally be taken to a Waste Transfer Station, not burnt.

People wishing to burn materials need to be aware of some obvious “dos” and “don'ts”, including:

- It is illegal to burn off on blocks under 2,000m²
- There is a need to gain appropriate Tasmanian Fire Service permits where applicable
- Do not burn green material, plastics or other prohibited material
- Avoid burning on hot, dry or windy days when the weather conditions are likely to cause smoke, ash, cinders or odour to impact on others or cause fires to spread
- Do not burn large amounts (large “stock” piles of more than one m²) of material at any one time
- Have the means to put out a fire available to you
- Appropriately supervise and control any burning material
- Advise neighbours

Smokey, smouldering fires, in or adjacent to residences, are not appreciated by anyone and may cause unexpected outcomes including triggering respiratory complaints.

Residents are reminded that although burning off is permitted outside the annual fire danger period on large blocks of land, there are penalties that can be applied under the *Environmental Management and Pollution Control Act 1994* and *Environmental Management and Pollution Control (Distributed Atmospheric Emissions) Regulations 2007* should negative consequences be experienced from any burning activity. In addition, the Tasmanian Fire Service administers a range of issues relating to fire control and can impose severe penalties for breaches. For further information on “dos” and “don'ts” with respect to fire, please contact the Tasmanian Fire Service on 1800 000 699.

Complaints regarding any burn off activities should be directed to Council's Environmental Health Officer on 6491 0200 in the first instance and also the Tasmanian Fire Service.

Back Yard Incinerators

The use of back yard incinerators, especially in residential areas to burn unwanted waste, is no longer a socially acceptable practice. Incinerators may be used on properties which exceed 2000m² in size subject to fire restriction periods.

Paper, cardboard, plastic and other materials can be legally disposed of in a number of ways, including recycling. The burning of these and similar materials can cause smoke and odour pollution which could lead to an infringement notice carrying a fine.

Noise

Noise should not create a nuisance for other people. In other words, noise should not unreasonably interfere with a person's enjoyment of their environment with regard to its volume, intensity or duration.

You should also consider the time of day and your location. If the noise can be heard in a habitable room of another residential premises, it may be considered to be unreasonable.

Noise from stereos after hours should be directed to the police. For noise that is emitted during the day, or is an in-going problem, Council's Environmental Health Officers may be able to deal with this problem. Remember to consider your neighbours.

Permissible hours of operation – Environmental Management and Pollution Control (Miscellaneous Noise) Regulations 2004.

The following equipment descriptions and hours of operation are an excerpt from the Regulations.

Lawnmowers and garden maintenance equipment powered by an engine:

Monday to Friday	Between 7am and 8pm
Saturday	Between 9am and 8pm
Sundays and Statutory holidays	Between 10am and 8pm

Chainsaws within 300 metres of residential premises

Monday to Friday	Between 7am and 6pm
Saturday	Between 9am and 6pm
Sundays and Statutory holidays	Between 10am and 6pm

Musical instruments and amplifying equipment

Monday to Thursday	Between 7am and 10pm
Friday	Between 7am and midnight
Saturday	Between 9am and midnight
Sundays and Statutory holidays	Between 10am and 10pm

Portable equipment such as power tools, cement mixers, etc.

Monday to Friday	Between 7am and 6pm
Saturday	Between 8am and 6pm
Sundays and Statutory holidays	Between 10am and 6pm

Motor vehicle, motor vessel or outboard motor (unless being operated to move into or out of residential premises or a construction or demolition site)

Monday to Friday	Between 7am and 6pm
Saturday	Between 9am and 6pm
Sundays and Statutory holidays	Between 10am and 6pm

Should you wish to operate equipment other than that specifically stated above, you should either contact

the Council or refer to the full Regulations.

Please note recreational vehicles (e.g. trail bikes etc.) must not be operated within 500m of domestic premises without the consent of the occupier of the premises.

Fence Construction

The *Boundary Fences Act 1908* sets out the law in Tasmania relating to erecting and repairing boundary fences.

A fact sheet can be found at [Fact sheet - Boundary fences - Tasmania Legal Aid](#).

Prior to construction of any fence, it is recommended that you contact Council's planning department as there are local regulations that apply to the height of both boundary and front fences.

Footpaths

Council footpaths are inspected annually, and a program established to rectify the most utilised paths with the greatest hazard to users.

For enquiries about works within road reservation contact Council Engineering Department.

Garbage Collection Service

Council has a mobile garbage bin service in operation with Veolia Environmental Services appointed as contractors. All property owners on the garbage collection route should have the prescribed green bin. Requests to obtain a new garbage bin or report lost or damaged bins should be directed to the Council Office. Garbage collection is as follows:

Barrington, Lower Barrington, Nook & Sheffield – Collection (every Friday) Acacia Hills, Railton, South

Spreyton – Collection (every Wednesday)

A map may be obtained from Council's website indicating collection areas.

Health

Aboriginal Health	No 34 Aboriginal Health Services	6425 8550
Advocacy Tasmania		1800 005 131
Aged Care	Tandara Lodge Community Care 10 Nightingale Avenue, Sheffield	6491 1277
Alcohol & Other Drugs		1800 811 994
Allied Health	Rural Health, Kentish Health Care Centre, 1 Henry Street, Sheffield	6491 2740
Centrelink	167 William Street, Devonport	131 021
Child Health	Child Health Clinic 1 Henry Street, Sheffield	1300 064 544
Community Nursing	Rural Health, Kentish Health Care Centre, 1 Henry Street, Sheffield	6491 2740
Community Transport	Mersey Community Care Devonport (3 – 7 days booking notice)	6424 8883
	Community Transport Services Tasmania	1800 781 033
Children's Oral Health Service	Kentish Health Centre 1 Henry Street, Sheffield	1300 011 013
Disability Information		1800 643 787
Department of Veterans Affairs		1800 555 254
Doctors Surgery	Sheffield Medical Centre 1 Henry Street, Sheffield	6491 1166
Emergency Relief	Kentish House 5 Austin Place Sheffield	6491 2322 0447 325 343
LGBTQIA+	Kentish Regional Clinic 66 High Street Sheffield	6491 1552
Meals on Wheels	Sheffield Other areas	0467 378 065 1800 696 325
Mental Health	Rural Health, Kentish Health Care Centre, 1 Henry Street, Sheffield	6491 2740

	Headspace	6424 2144
	Rural Alive and Well	6254 2740
Multicultural Council of Tasmania		6170 9196
Oral Health	23 Steele Street, Devonport	1300 011 013
Parenting Line		1300 808 178
Pharmacy	Turnbull Pharmacy 57 Main Street, Sheffield	64911155
	Railton Pharmacy 33 Foster Street, Railton	6496 1023
Private Medical Practice	Dr Merran Dyer, 12 Duff Drive, Sheffield	6491 2369
Respite Care	Tandara Lodge Community Care 10 Nightingale Avenue, Sheffield	6491 1277
Suicide Prevention	Kentish Regional Clinic (CORES) 66 High Street, Sheffield	6491 1552

Immunisation

Vaccinations are provided in accordance with the National Health and Medical Research Council's, National Immunisation Program.

Regular immunisation can be arranged by appointment at your own doctor's surgery or the Sheffield Medical Centre, 1 Henry Street, Sheffield on 6491 1166.

Council conducts school immunisations in line with the program approved by the Tasmanian Department of Health and Human Services.

Vaccination for the following diseases will be available to eligible students: Human Papilloma Virus (*HPV*), Diphtheria, Tetanus and Pertussis (*dTpa*). The current schedule proposes all school vaccinations will be given in grade 7.

Further details can be obtained from Council's Environmental Health Officer.

Justices of the Peace

A list of Justices of the Peace residing in the municipality can be found in the Kentish Local Services and Community Directory. This publication is available from the Council Office or website www.kentish.tas.gov.au

Normally there is a Justice of the Peace available at the Service Tasmania Shop in Sheffield, but on occasions this may not be the case.

A Commissioner of Declarations is empowered to exercise some of the ministerial functions of Justices of the Peace. They may witness signatures to documents and take statutory declarations but they are not authorised to administer, take or receive an oath, affidavit or affirmation or receive a complaint or issue a summons or warrant. A Commissioner of Declarations is appointed by profession and can be found at many Councils, Post Offices, banks, schools and the like.

Living Next Door to a Farmer

The Living Next Door to a Farmer campaign was created by the Tasmanian Farmers and Graziers Association (TFGA) and commenced in 2019.

The project objective is to educate and engage the community, with the aim to foster good neighbourly relations between farmers and residents in new and existing peri-urban locations.

Life in a rural community can be a very rewarding and beneficial lifestyle once farming activities are understood. If you are planning a move into a rural community, or indeed are already living in a rural location, it helps to do some investigation within the location before moving. Remember some farming practices are seasonal, so even a roadside inspection may not reveal all aspects of what occurs on a neighbouring farm, especially if you visit out of season.

As part of the campaign a booklet was created which includes information about farming such as biosecurity, cat management and dog control, fencing, seasonal farming practices, property management planning, property management (including vegetation, burning off, fire hazard management, feral pests, invasive animals, noise and wildlife), right to farm, stock management, waterway management and weed management. Download a copy of the Living Next Door to a Farmer Booklet from the Kentish Council website www.kentish.tas.gov.au.

The project is managed by the TFGA, proudly funded by the Tasmanian Government and support by Local Government Association Tasmania (LGAT) and Real Estate Institute of Tasmania (REIT). You can access the TFGA website for further information about the campaign www.tfga.com.au.

Museum

The Kentish Museum is currently closed.

The Wilmot Museum, located on Main Road, Wilmot operates every Saturday and Sunday from 10am till 2pm. Entry is via a small donation. Contact 6492 1121 for further information.

Parking

Kerbside parking is free throughout the entire municipality with parking bays line marked in the urban centres of Sheffield, Railton and Wilmot.

There is a free Council car park provided at the rear of the Chemist and The Don Store Supermarket in High Street also to the east of the RSL in Main Street, Sheffield. Parking is regulated at one (1) hour along Main Street in the central business district (CBD).

Although there are no parking meters, be aware that significant on the spot fines may be issued to residents and visitors that park on any yellow lines, in invalid/disabled parking zones, within loading zones or park longer than the permitted time.

Parks and Reserves

The Kentish Municipality has many attractive parks, playgrounds, picnic areas and barbecue sites. Reserves and playgrounds include –

Sheffield – King George V Park, Mural Park and Kentish Health Care Centre Park
Railton – Lions Park, Goliath Park and Railway Park
Wilmot – Wilmot Hall and Lake Barrington Park
Lake Barrington at West Kentish – West Kentish Park
Gowrie Park – O’Neills Creek Reserve

Further information is available from the Kentish Visitor Information Centre on 6491 1179.

Pests and Vermin Control

If you have pests or vermin on your private land (such as rats, mice, wasps and bees) you should contact a pest controller to remove or manage them. Kentish Council does not offer any pest or vermin control services on private land or inside private residences.

Rabbits

Rabbits are classified as vermin in Tasmania under the Vermin Control Act 2000. For any concerns relating to rabbits on private land, please contact the Department of Natural Resource and Environment Tasmania ph 03 6165 3777.

CATS

Domestic cats are a part of many households and are a valued companion to many people. Under the *Cat Management Act 2009*, pet owner obligations include:

- Only registered breeders are permitted to breed cats.
- Any cat given away or sold must be older than 8 weeks, de-sexed and micro-chipped.
- All cats over the age of 4 months must be micro-chipped.
- All cats over the age of 4 months must be de-sexed.

The Act also provides powers to trap, seize or destroy stray and feral cats in certain circumstances and gives land owners and managers the statutory power to control (including destruction) cats found on their land.

Over many years, a feral cat population has become established in Tasmania. DPIPWE is responsible for coordinating efforts to better understand and reduce these impacts. A state-wide plan is being developed to support these efforts. As part of this, the Invasive Species Branch (ISB) is consulting with key industry and community groups.

DOG REGISTRATION & MICROCHIPPING

In accordance with the *Dog Control Act 2000*, all dogs over the age of 6 months must be registered with the local Council in whose municipality they live. Dog registrations are valid from 1 July to 30 June each year. Prior to registration all dogs must be micro-chipped. This micro-chip number is a vital requirement on the Council's Dog Register as well as the National Databases.

OFF-THE-LEAD DOG EXERCISE AREAS

The *Dog Control Act 2000* provides for a Council to set aside areas for the exercising of dogs, subject to specific conditions. All dogs enjoy the freedom of running around without a leash. Kentish Council has established special areas at Sheffield and Railton to give your dog the chance to run around leash-free without fear of attracting a fine, provided it is still under effective control. Off-the-lead dog exercise areas are located at Railton Recreation Reserve (designated fenced off area only), Sheffield Recreation Reserve (designated fenced off area only, access at East Victoria Street), Kentish Park, Wilmot Park, Gowrie Park Reserve (adjacent to Rodeo Ground).

AREAS WHERE DOGS ARE REQUIRED TO BE ON LEADS

As declared under the *Dog Control Act 2000*, all road and road related areas in built up areas within the Kentish Council boundaries are areas where dogs must be on leads at all times. There are some areas of bushland reserves where dog walking is acceptable but only using established tracks and trails with dogs remaining on leads to prevent them from straying into sensitive bushland habitat. In addition, the following areas have been declared as areas where dogs must be on a lead at all times: All Council parks and recreation reserves, except those designated as off lead areas.

DOG RESTRICTED AREAS

The *Dog Control Act 2000* prohibits dogs in any:

- grounds of a school, pre-school, kindergarten, crèche or any other place for the reception of children without the permission of a person in charge of the place
- shopping centre or shop
- playing area of a sportsground on which sport is being played
- area within ten metres of a children's playground

BANNED AREAS:

In accordance with the Act, the following areas are declared out of bounds to dogs: King George V Park Sheffield, Goliath Park, Railton Recreation Reserve (except here otherwise permitted), Sheffield Recreation Reserve (except where otherwise permitted), Wilmot Recreation Reserve (except where otherwise permitted), Park at Wilmot Hall.

TRAINING AREAS

There is a fenced off-lead dog park at the Sheffield Recreation Reserve, access via East Victoria Street, Sheffield.

Planning Permits

All development and use of land within the Kentish Municipality is governed by a planning scheme. Should you wish to establish a new development (even if building approval is not required), you may need planning approval. Types of new development include construction of accesses, land clearing, any site works, home-based business, commercial and industrial activity, signage and the like and should be discussed with Council's Planning staff.

Plumbing Permits

Plumbing permits including septic systems must be obtained before work commences on any project. To obtain a permit, plans should be submitted to the Council showing the relevant details of the proposed works. Household drainage plans can be obtained by contacting Council's Building staff during normal business hours.

Postal Services

There are three postal service facilities located within the Kentish Municipality:

- Railton Licensed Post Office, 2 Foster Street, Railton
- Sheffield Post Office, 58 Main Street, Sheffield
- Wilmot Shop, 64 Main Road, Wilmot

Rates

Each year rates are set by estimating the cost of services, infrastructure and projects that need to be funded throughout the following year less anticipated revenue from State and Commonwealth Grants together with fees and charges. The balance expenditure is funded from rates and charges.

Essentially, the rates that you pay are your investment in local services and facilities for the betterment of the community not only now, but in years to come.

Rate notices are issued early in each financial year with a discount offered if rates are paid in full within four weeks of issue. Ratepayers also have the choice to elect to pay by four instalments.

Where ratepayers are unable to pay in full or by four instalments, arrangement for other periodical payment schedules can be arranged by contacting the Rates Officer.

Legal proceedings, which may lead to a defaulting ratepayer incurring substantial costs, may be commenced without further notice if rates and charges are not paid on time.

Pensioner Rate Remission

Through Council, the State Government offers a pensioner rate remission to all eligible pensioners. Eligible cardholders include

- A Centrelink Pensioner Concession Card, or
- A Department of Veteran's Affairs Repatriation Health 'Gold Card' which bears the inscription 'War Widow/Widower DVA' or 'TPI', or
- Health Care Card Holders – Australian Government.

The pensioner must own or occupy the house as their principal place of residence as at the 1st July in the financial year the rates are levied to get the remission. Their pension card must have also been granted by that date. The remission is 30% of the rates with a maximum set annually by State Government, plus 20% of the fire levy.

Please contact Council's Rates Officer to check your eligibility as staff will be happy to advise and answer any questions.

Recycling Service

A domestic kerbside recycling collection service is available to those residences that receive a household garbage collection. Each residence is issued with a yellow-lidded recycling wheelie bin. The service operates fortnightly on a Friday.

Recyclable materials include plastics with the symbol 1,2,3,4,5,6, newspapers, magazines/junk mail/cardboard/office papers, glass, milk and juice cartons, steel and aluminium cans. Please rinse all containers and remove ALL lids. Do not bundle paper and cardboard.

Non-recyclable materials which should NOT be placed in bins includes plastic bags, window glass or mirrors, batteries, light globes, polystyrene foam, crockery, household rubbish, food items, household chemicals or oils and nappies.

Council has three recycling drop off points within the municipality:

- Sheffield Transfer Station is located at East Victoria Street, Sheffield,
- Wilmot Transfer Station is located at Lake Barrington road, Wilmot.

Recyclables can be disposed free-of-charge at these locations. The Hub, located at 35 High Street, Sheffield, will accept some second-hand goods such as clothing, books, crockery, bric-a-brac etc.

Waste engine oil is accepted free-of-charge at either the Sheffield Waste Transfer Station or Wilmot Waste Transfer Station.

E-waste (electronic waste such as computers, televisions etc.) is accepted at Sheffield Waste Transfer Station.

DrumMUSTER collection of clean chemical containers is available by appointment at Spreyton Waste Transfer Station, Mersey Road, Spreyton Phone 6427 3351.

Road Reservation Works

The day to day maintenance of the nature strip is the responsibility of the property owner to manage including desired appearance, re-shaping and grassing without creating any hazards to the public.

All other works, including any variation to driveway width or excavations within the road reservation are subject to separate Council approval.

Sharps Disposal Service

Council provides a free service for the proper disposal of sharps containers for diabetics, home care patients or any resident who requires this service within the Kentish Municipality. Full sharps containers may be disposed of at the sharps disposal bin located between Service Tasmania and the Town Hall in High Street, Sheffield. If your container does not fit down the chute, it can be taken to the Council Office during business hours and exchanged for a new container.

Sharps containers (1.4 Litre) are available from the Council Office, free-of-charge during office hours. For further information contact Council's Environmental Health Officer.

Under no circumstances is "sharps" type waste to be taken to the Waste Transfer Station or disposed of in the domestic refuse collection service.

Sport and Recreation

Many sports are played in the Kentish Municipality and there are a large number of recreation clubs operating within the area.

Facilities range from tennis courts, bowls clubs, youth centre, golf club, skate park, football and cricket grounds to small parks with play structures to larger parks with additional features such as barbecues and toilets.

King George V Park at High Street, Sheffield, was formerly the town cemetery before being changed into a park in 1910 and includes public toilets, children's play equipment and a skate park.

Goliath Park at Crocker Street, Railton, is the municipality's largest recreational park and includes a pump track, bike-wash down facilities, skate park, public toilets, basketball courts, tennis courts and children's play equipment.

The Green Room (Sheffield Youth Centre) is located in High Street, Sheffield. Activities include Eightball, PlayStation, computers and free internet, music, games, snacks and youth health information. Youth must be aged between 12-24 years to attend the Green Room.

Wilmot Youth Group is located at the Wilmot Recreation Grounds. The group meets every second Friday for activities. Contact 0419 389 738 for more information.

Railton Youth Room is located at the Railton Recreation and Community Centre, Railton. Activities include Eightball, table tennis, music, games, snacks and youth health information. For more information on the Railton Youth Room, contact Kentish House at 64912322.

Recreation Grounds There are three **Recreation Grounds** within Kentish located at Sheffield, Railton, and Wilmot. These grounds are operated by a Committee for football, cricket etc. Recreation Grounds can be hired for sports and events. Bookings can be made by contacting the

appropriate Committee. Users are required to complete an Application-for-Use form. Please refer to the Kentish Local Services and Community Directory for contact information.

Lake Barrington can be accessed from West Kentish and Wilmot. The lake provides a range of aquatic activities such as rowing, canoeing, power boating, skiing, fishing, and swimming (you must provide your own equipment for these activities).

Stormwater

Any new connection to Council's stormwater system is to be undertaken by Council or an approved contractor at the developers cost.

New connections to the town sewer or water system are supplied by *Tas Water* who are contactable by phoning 13 69 92.

Transport

Air

Devonport Airport is serviced by Qantaslink airlines 13 1313
Tasair provides daily passenger and freight services from Devonport Airport 6427 9777

Road

Merseylink provides a bus service from Sheffield to Devonport via Railton and Latrobe and return. Visit <https://www.merseylink.com.au/> for further information.

Mersey Community Care provides a scheduled service for HACC eligible passengers.

Community Transport Services Tasmania operates a bus services from Sheffield to Devonport via Railton and Wilmot to Devonport via Ulverstone. 6421 8706

Private bus contractors are available for hire.

Taxis are based in the neighbouring city of Devonport.

Sea

TT-Line operates regular ferries between Devonport and Melbourne (daily). Passenger reservations are available by phoning 13 2010.

A number of freight transport services are provided by local companies. Refer to the Yellow Pages for details.

Venue Hire

Within the Kentish Municipality there are a variety of venues available for hire by community and private groups.

The Sheffield Town Hall and Supper Room located in High Street, Sheffield, is available for public hire. Please contact the Kentish Council on 6491 0200 to make a booking.

The Kentish Community Rooms, also in High Street, Sheffield, are available for public hire. Please contact the Kentish Council on 6491 0200 to make a booking.

There is also a large range of Community Halls available for hire throughout the municipality. Please refer to the Kentish Local Services and Community Directory for a comprehensive list. A copy of this publication is available from the Council Office or from Council's website www.kentish.tas.gov.au

Visitor Information Centre

Council supports the operation of a Visitor Information Centre within Kentish.

Sheffield Visitor Information Centre
5 Pioneer Crescent, SHEFFIELD TAS 7306
Phone: 03 6491 1179
Email: svic@kentish.tas.gov.au

Opening Hours (Summer*)

Monday - Friday 9.00am - 5.00pm
Saturday - Sunday 9.00am - 3.00pm
Public Holidays 9.00am – 3.00pm

Opening Hours (Winter*)

Monday – Friday 9.00am – 4.00pm
Saturday – Sunday 9.00am – 1.00pm
Public Holidays 9.00am – 1.00pm

** Exact season length varies according to daylight savings dates annually.*

Closed Christmas Day and Good Friday.

The centre has a range of information and brochures regarding local and nearby attractions.

Volunteering

Residents can contact Council's Community Development staff to discuss opportunities for volunteer work in the community. Some of the many opportunities available are listed below.

Visitor Information Centre – Help visitors from interstate and overseas to enjoy their time visiting Kentish by becoming a volunteer at the Kentish Visitor Information Centre. The centre is open 7 days a week all year round.

Waste Transfer Station

Waste is collected at either the Sheffield Waste Transfer Station, East Victoria Street, Sheffield, or the Wilmot Waste Transfer Station, Lake Barrington Road, Wilmot, then transported to a disposal site at Dulverton, which is not accessible to the general public. Operating hours for the transfer stations are:

Site hours -

Sheffield	Monday, Wednesday, Saturday and Sunday	12noon - 5.00pm
	Tuesday	Closed
	Thursday and Friday	8.00am – 1.00pm
Wilmot	Wednesday	2.00pm - 5.00pm
	Saturday	9.00am – 12 noon
	Sunday	1.00pm – 3.00pm

Both sites are closed on Good Friday and Christmas Day and may be closed on other Public Holidays. Please check the website for further information.

Council provides free entry to Waste Transfer Stations for Kentish residents and ratepayers. Please deposit recyclables and waste in the designated areas or as directed by the operator.

Hazardous and commercial waste is not accepted at the transfer stations and arrangements should be made to take this waste directly to an approved landfill. Contact details for Dulverton Regional Waste, phone 6424 7344.

Water and Sewerage

TasWater sources, treats and supplies drinking water, and removes and treats wastewater to homes and businesses in reticulated areas throughout the Kentish Municipality.

Their website - [Home - TasWater](#) – provides a wealth of information about the services that they provide.

If you encounter problems with your water and/or sewage, please phone 13 69 92.

Weeds

Kentish Council, in conjunction with other organisations, has identified seven weeds of municipal significance for residents and ratepayers to be aware of in managing their own property. These weeds are listed below and residents can contact Council regarding recommended control methods.



Californian Thistle



Spanish Heath



St Johns Wort



Vipers Bugloss



Patterson's Curse



Ragwort



Pampas Grass

There are also weeds of State significance and Weeds of National significance, such as gorse, blackberries and willows. Further information on these weeds may be obtained from the Department of Natural Resources and Environment Tasmania www.nre.tas.gov.au

Council's weed management policy can be viewed on our website.
http://www.kentish.tas.gov.au/webdata/resources/files/Weeds_Policy_sept2010.pdf

Check List

It's often said that moving house is one of the most stressful things you will ever do. Several important decisions need to be made and there are many things to do. The checklist below will assist you with notifying relevant organisations of your change of address. You may also wish to consider having your mail re-directed for an interim period. Your local post office can assist you with this.

- Australia Post (re-direction of mail)
- Australian Electoral Office (132 326)
- Banks and Financial Institutions
- Clubs and Unions
- Medicare
- Department of State Growth – Motor Registry
Office C/- Service Tasmania
- Centrelink
Newstart, Jobsearch, Newstart Allowance Enquiries (132 820)
Pension Enquiries (132 300)
Family Payment Enquiries (131 305)
- Employer
- Insurance Companies
- Newspapers, Subscriptions
- Other Educational Facilities

Notes

